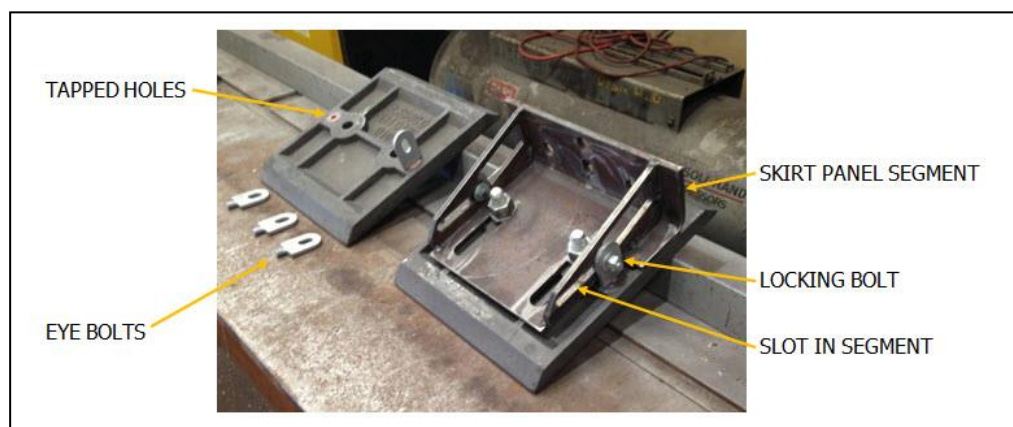


# NON DROP SKIRT LINER

- Prevent skirt liner dislodgement
- Prevent skirt liner falling onto carry belt
- Minimise belt repairs

The H and B 'Non-drop Skirt' incorporates a custom designed skirt liner (to mining standards) that incorporates inserts that allow for two 'eye bolts' to be screwed into the liner to provide a locking interface. The skirt liner can be installed with or without the 'eye bolts'. Either way the skirt liner will function as a normal conveyor skirt liner. The receiving locking interface on the skirt panel utilises two stiffener plates with slots to which the 'eye bolts' can be fixed with locking bolts.

Upon installation of the skirt liner onto the skirt panel, the 'eye bolts' on the skirt liner are aligned with the slots in the skirt stiffener and are locked together with a locking bolt. Once the locking bolts are installed there is little or no chance that the liner will get dislodged and fall into the ore stream.



## NON-DROP CONVEYOR SKIRT LINER ASSEMBLY PROCESS:

- a. The non-drop skirt liners are supplied with two tapped holes to allow 'eye bolts' to be fitted to each liner.
- b. Once the eye bolts are fitted the liner has the ability to be locked in place to the fixed skirt panel.
- c. 'Locking bolts' fitted through the 'eye bolt' and the slot in the skirt segment lock the skirt liner in place.



7 Tahiti Lane  
Hillarys, WA 6025  
(08) 9403 2993  
[www.handbmining.com.au](http://www.handbmining.com.au)

