



H & B DRAWING No:-  
DDRI-1524-1-A2  
1524 x 45 DEG 3 - ROLL

**GENERAL FABRICATION NOTES :-**

- 1]. ALL HOLES TO BE 22 DIA U.N.O.
- 2]. ALL BOLTS TO BE M20 CLASS 8.8 U.N.O.
- 3]. ALL WELDS TO BE 6 mm CONT. FILLET U.N.O.
- 4]. ALL WELDS TO CONFORM TO AS 1554 CATAGORY S.P. U.N.O.
- 5]. ALL FITTINGS LOCATED CENTRALLY U.N.O.
- 6]. ALL INTERNAL NOTCHES TO HAVE 11mm RADIUS U.N.O.
- 7]. ALL STEELWORK, WELDING & FABRICATION TO CONFORM TO CURRENT S.A.A. CODES & STANDARD SPECIFICATION SKM-STD-C-009.
- 8]. ALL R.H.S. & S.H.S. TO CONFORM TO AS1163 U.N.O.
- 9]. ALL PAINTING & TREATMENT TO BE IN ACCORDANCE WITH STANDARD SPECIFICATION SKM-STD-C-011.  
- HOT DIP GALVANIZED.
- 10]. ALL MARK NUMBERS TO BE HARD STAMPED & PAINTED AFTER TREATMENT IN LOCATION SHOWN ON DRAWING. U.N.O.
- 11]. ALL SNIPES TO BE 15 x 15 U.N.O.
- 12]. ALL BURRS AND SHARP EDGES TO BE REMOVED.

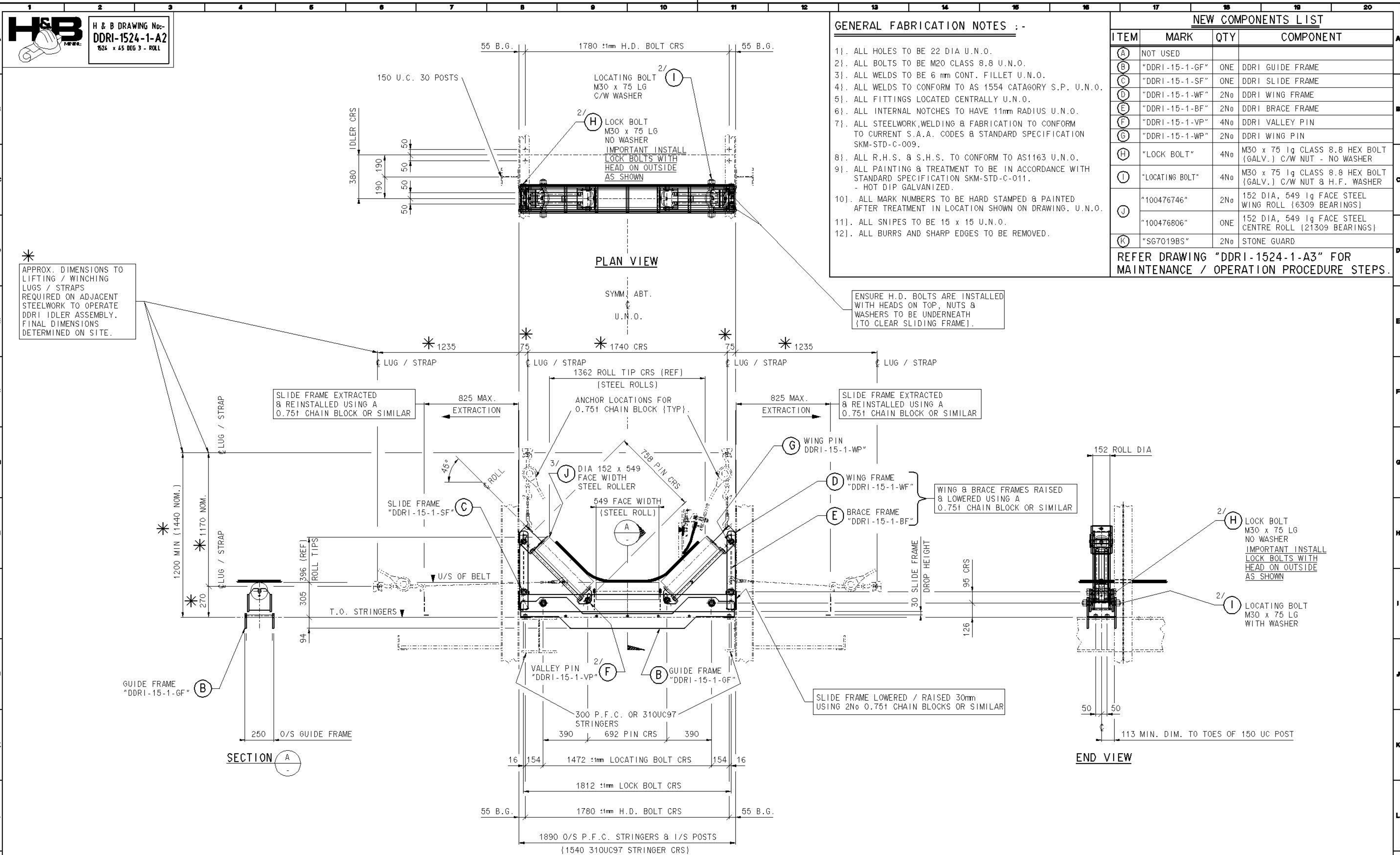
**NEW COMPONENTS LIST**

ITEM	MARK	QTY	COMPONENT
(A)	NOT USED		
(B)	"DDRI-15-1-GF"	ONE	DDRI GUIDE FRAME
(C)	"DDRI-15-1-SF"	ONE	DDRI SLIDE FRAME
(D)	"DDRI-15-1-WF"	2No	DDRI WING FRAME
(E)	"DDRI-15-1-BF"	2No	DDRI BRACE FRAME
(F)	"DDRI-15-1-VP"	4No	DDRI VALLEY PIN
(G)	"DDRI-15-1-WP"	2No	DDRI WING PIN
(H)	"LOCK BOLT"	4No	M30 x 75 lg CLASS 8.8 HEX BOLT (GALV.) C/W NUT - NO WASHER
(I)	"LOCATING BOLT"	4No	M30 x 75 lg CLASS 8.8 HEX BOLT (GALV.) C/W NUT & H.F. WASHER
(J)	"100476746"	2No	152 DIA, 549 lg FACE STEEL WING ROLL (6309 BEARINGS)
(J)	"100476806"	ONE	152 DIA, 549 lg FACE STEEL CENTRE ROLL (21309 BEARINGS)
(K)	"S67019BS"	2No	STONE GUARD

REFER DRAWING "DDRI-1524-1-A3" FOR MAINTENANCE / OPERATION PROCEDURE STEPS.

\* APPROX. DIMENSIONS TO LIFTING / WINCHING LUGS / STRAPS REQUIRED ON ADJACENT STEELWORK TO OPERATE DDRI IDLER ASSEMBLY. FINAL DIMENSIONS DETERMINED ON SITE.

ENSURE H.D. BOLTS ARE INSTALLED WITH HEADS ON TOP, NUTS & WASHERS TO BE UNDERNEATH (TO CLEAR SLIDING FRAME).



**DDR IDLER ASSEMBLY TYPE "DDRI-1524-1"**

(1524 WIDE x 45 DEG TROUGH - 3 DIA 152 ROLLS)  
(TOTAL MASS - WITH ROLLS = 264 kg, WITHOUT ROLLS = 200 kg)

DDRI-1524-1-A1	DDRI IDLER 1524 x 45 DEG BELT G.A. SHT 1	0	GB	FEB 12	DRAWING ADOPTED FOR P/N 9999	EH	06												
DDRI-1524-1-A3	DDRI IDLER 1524 x 45 DEG BELT G.A. SHT 3																		

REV	BY	DATE	DESCRIPTION	CHKD	APP	REV	BY	DATE	DESCRIPTION	CHKD	APP

DRAWN	G.BRAITHWAITE	FEB 12
TRACED		
CHECKED	E.HODGKINSON	FEB 12
SUPT DRAFT		
PROJ. ENG.	GLENN STAGG	
APPROVED		
APP. FOR CONST.		

<b>RioTinto</b> CAPE LAMBERT - PORT B EXPANSION - GENERAL EQUIPMENT - DROP DOWN RETRACTABLE IDLER (DDRI) - 1524 x 45° BELT INSTALLATION G.A. SHT 1		SCALE 1:15 DRAWING NUMBER <b>DDRI-1524-1-A2</b> PROJECT NUMBER P/N 9999
--	--	--



Head Office  
7 Tahiti Lane, Hillarys, Perth, Western  
Australia  
Phone: (08) 9403 2993  
Email: [info@handbmining.com.au](mailto:info@handbmining.com.au)

[www.handbmining.com.au](http://www.handbmining.com.au)

## H & B Mining: “The Experts in Conveyor Skirts”

H & B Mining design and supply a range of “Easy Maintenance” conveyor transfer products to the Australian mining industry with the aim of providing a safer, easier to maintain and more efficient working environment at conveyor transfer points.

H & B Mining was established in April 1993 with the promise of providing a standalone conveyor design service tailored to accommodate the mines of Australia. After witnessing maintenance crews struggling to maintain and change out poorly designed products for conveyor transfers H & B decided to expand its portfolio by developing its own range of ‘Easy Maintenance Products’ for conveyor transfer points including: conveyor idlers, conveyor skirting systems, hinged dust covers, conveyor guards, conveyor diversion plough, streamline conveyor transfer design and the retractable loading boot.

The “Easy Maintenance” conveyor product range harnesses H & B’s vast experience in the field along with the innovative design technology nurtured over the years within the H & B design team. The Australian mining industry has benefited from H & B’s toil, witnessing enhanced overall productivity, reduced shutdown time and improved safety whilst gaining cost effective mining conveyor operations. H & B Mining products have been installed as mine standard by Rio Tinto, BHP Billiton, Roy Hill and FMG, amongst others.

## Drop Down Retractable Idler

The H and B Mining conveyor idlers are designed to facilitate & simplify the removal/replacement of worn or damaged idler rollers whilst the units remain in an “Insitu” location under skirted or difficult access areas on conveyor systems.

The H and B Drop Down Retractable Idler is designed for use on a conventional conveyor system arrangement of a single row of rollers and incorporates a retractable capability which improves access to the central idler roller, enabling easy maintenance. They are manufactured to facilitate site standard impact or carry idler rollers or any other nominated rollers used by the Australian mining industry.

The Drop Down Retractable Idler allows for replacement of the wing rollers alone (Procedure A) or the central roller and one or both of the Wing rollers (Procedure B). Idler Rollers are replaced by using standard ¾ tonne lever/chain blocks or similar to raise, lower & retract the frame components as required.